

CEO Report

January 28, 2021

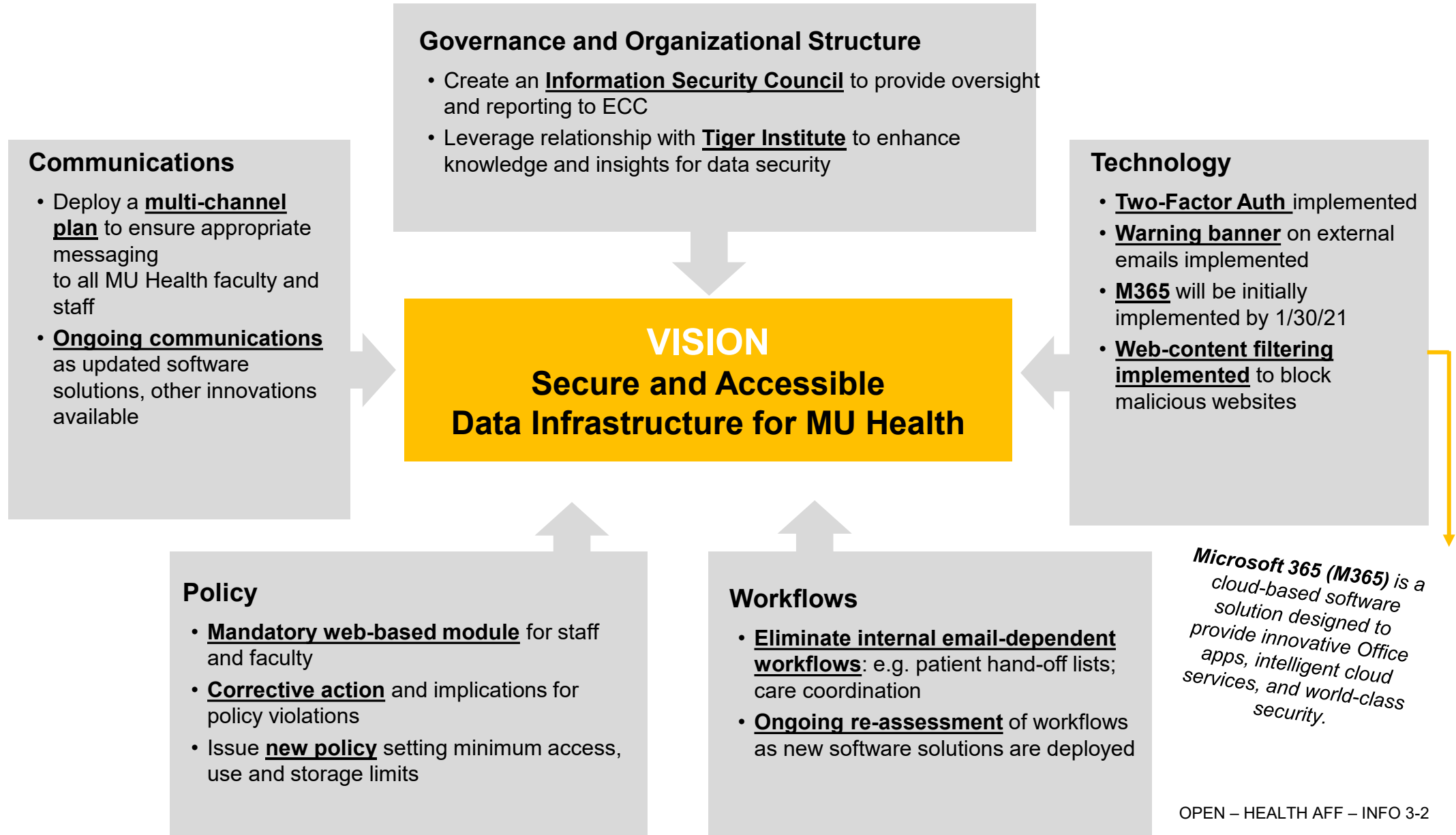
Jonathan Curtright
Chief Executive Officer



University of Missouri

MU Health Care | NextGen Precision Health | School of Medicine

MU Health Data Security Task Force: Work Group Recommendations



MU Health Care Organizational Structure

Executive Vice Chancellor for Health Affairs
Richard Barohn, MD

Jonathan W. Curtright
Chief Executive Officer

- Portfolio:**
- Corporate Partnerships
 - Jefferson City Strategy
 - Development
 - HNM and MPACT
 - Network development
 - Office of General Counsel
 - Strategic Communications
 - MU Health Strategic Planning
 - Compliance

Mary Beck, DNP, RN
Chief Nursing Officer

- Amy Trueblood, RN
 - Julia Settles, MD, JD
 - Directors of Nursing (Matrix)
 - Colleen McNally
 - Deb Deeken, RN
- Strategic Project:**
- COVID-19 ICS
 - Magnet Status (CRMC and MU Health Care)
- Portfolio:**
- MU Psychiatric Center
 - Prof. Nursing Practices
 - Medical Liability
 - Accreditation
 - Risk Management
 - Liaison to academic programs

Steve Whitt,
Chief Clinical Officer

- Stephanie Cordray
 - Bob Schaal
 - Jim Stannard, MD
 - Matt Waterman
 - Calvin Posley, RN
 - ACMO's
 - Medical Directors
 - Deb Koivunen, MD
- Strategic Project:**
- Jefferson City Strategy (Gaspere Calvaruso)
- Portfolio:**
- Ambulatory Services
 - MOI
 - Ellis Fischel
 - Procedural Services
 - GME Programs
 - Clinical Service Lines
 - Sr. Dean for Clinical Affairs

Keri Simon
Interim Chief Hospital Operations Officer

- Roger Higginbotham
 - John Hornick, RN
 - Misty Jones, RN
 - Kelly Reilly
 - Bridgette Robbins, RN
 - Sandy Harryman, RN
 - Christina Vollrath, RN
- Strategic Project:**
- Children's Hospital Project
- Portfolio:**
- Hospital Operations (UH, WCH)
 - Facilities Planning & Ops
 - Acute Care & Trauma Service Line

Beth Alpers, RN
Interim Chief Human Resources Officer

- Jason Miller
 - David Gaus
 - Lacy Lugo
 - Nikki McGruder
- Function**
- Human Resources
 - Diversity/Inclusion
 - Title IX
 - Recruitment
 - Talent Development

Kay Davis, RN
Chief Financial Officer

- Teresa Brooks
 - Paula Littleton
 - David Parker
 - Vince Cooper
 - John Mikesic
 - Shelley Naydyhor
- Strategic Projects:**
- Custom Networks
 - Gov't Payer Strategy
- Portfolio:**
- Budget & Accounting
 - Financial Analytics
 - Revenue Cycle
 - Business Planning
 - Managed Care
 - Supply Chain
 - Network development

Robert Pendleton, MD
Chief Quality Officer (Whitt)
Health Care Strategy (Curtright)

- Kevin Gwin
 - Susan Heimsoth
 - Koby Clements
- Strategic Projects:**
- Vizient Performance
 - Health System Strategy
- Portfolio:**
- Value-Based Care
 - Quality and Safety
 - Data Analytics
 - Patient Experience

Bryan Bliven
Chief Information Officer

- TI Directors
 - Sean Rivera
 - Belynda Imhoff
- Strategic Projects:**
- Data Security
 - Corporate Partnerships (Cerner, Siemens)
- Portfolio:**
- Tiger Institute
 - Data Security
 - LRHS, CRMC IT
 - Clinical Engineering

Marty McCormick
Executive Director, Marketing and
Community Engagement

- Heather Lockard
 - Laura Schemel
 - TBN Director, Community Engagement
 - Prairie Dog
- Portfolio:**
- Strategic Planning
 - Health System Marketing
 - Advertising
 - Community philanthropy
 - Brand Management
 - Employer Branding

Brad Myers, Pharm D
Executive Director, Pharmacy and Lab Services

- Pharmacy Directors
 - Laboratory Directors
- Portfolio:**
- Laboratory Operations
 - Pharmacy operations
 - Retail Pharmacy
 - 340B Program

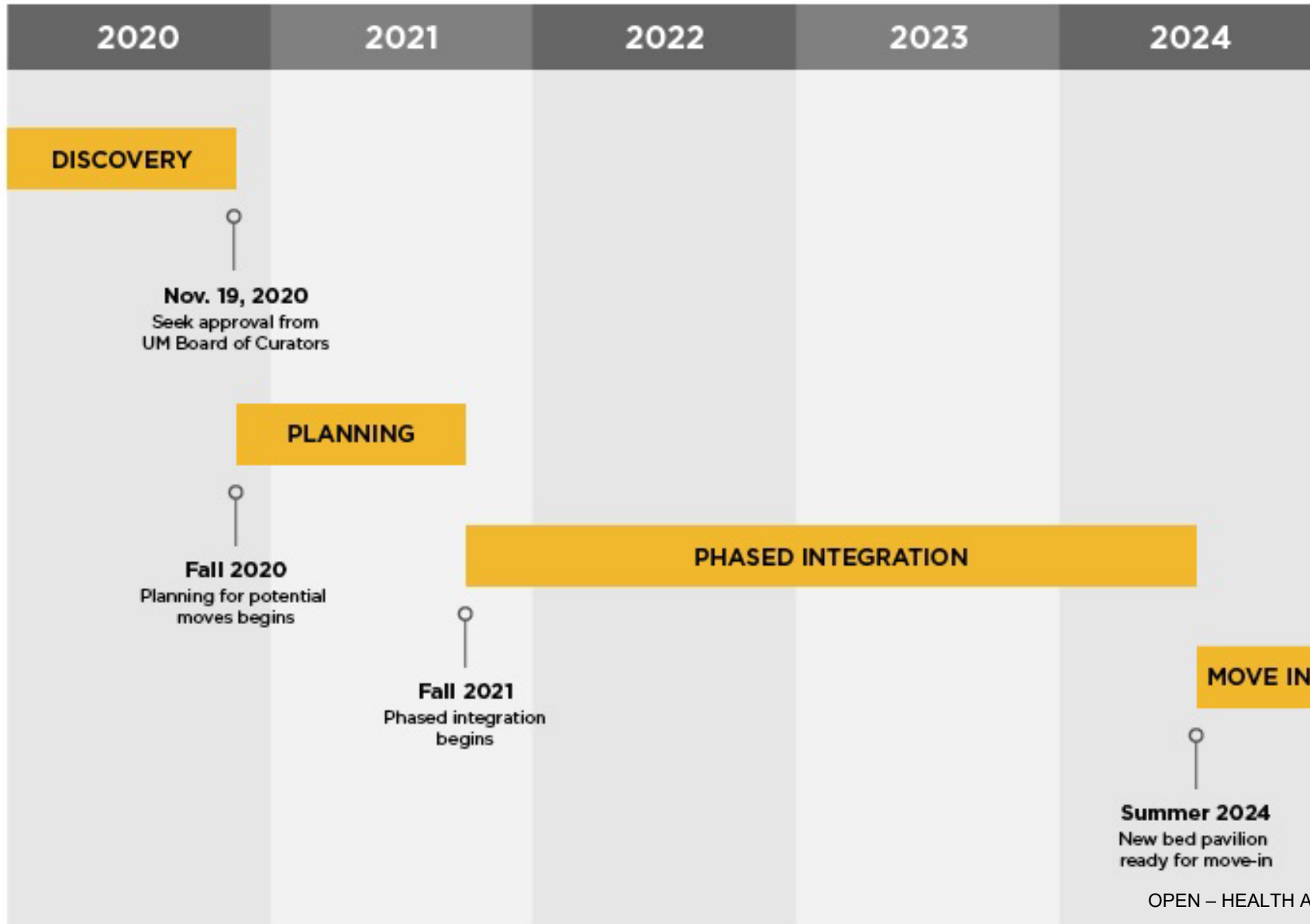
Gaspere Calvaruso
President, CRMC

- CMRC Leadership Team
- Strategic Project:**
- Jefferson City Strategy (Dr. Whitt)
- Portfolio:**
- CRMC Operations
 - CRMC Board
 - HNM Chair

Clinical Integration Update



Clinical Integration Timeline



Clinical Integration Updates

Phase I - Fall 2021

- Consolidation of I/P Peds and PICU, Children's Procedure Suite, Cancer and Blood Disorder Unit, I/P and O/P Pediatric Surgeries, Emergency Department, and most Pediatric Clinics
- LOTS of work and moving parts over the next 6-12 months building out additional clinical space to accommodate Phase 1 Consolidation
- Goal of minimizing temporary spend that does not have long-term use / value

Phase II - Summer 2024

- Design groups kicked off mid-December, 2020
- Site work begins February 2021; Construction begins May 2021
- Construction complete and occupancy by Summer 2024

Crucial for Success

- Keeping teams within scope, well-thought-out but rapid decision making, strong communication, leader alignment

Our Collective Building

40+ project teams

300+ people

Design Development: Workshops 4-6, February - April

Mock-ups and virtual reality



* photos pre-pandemic

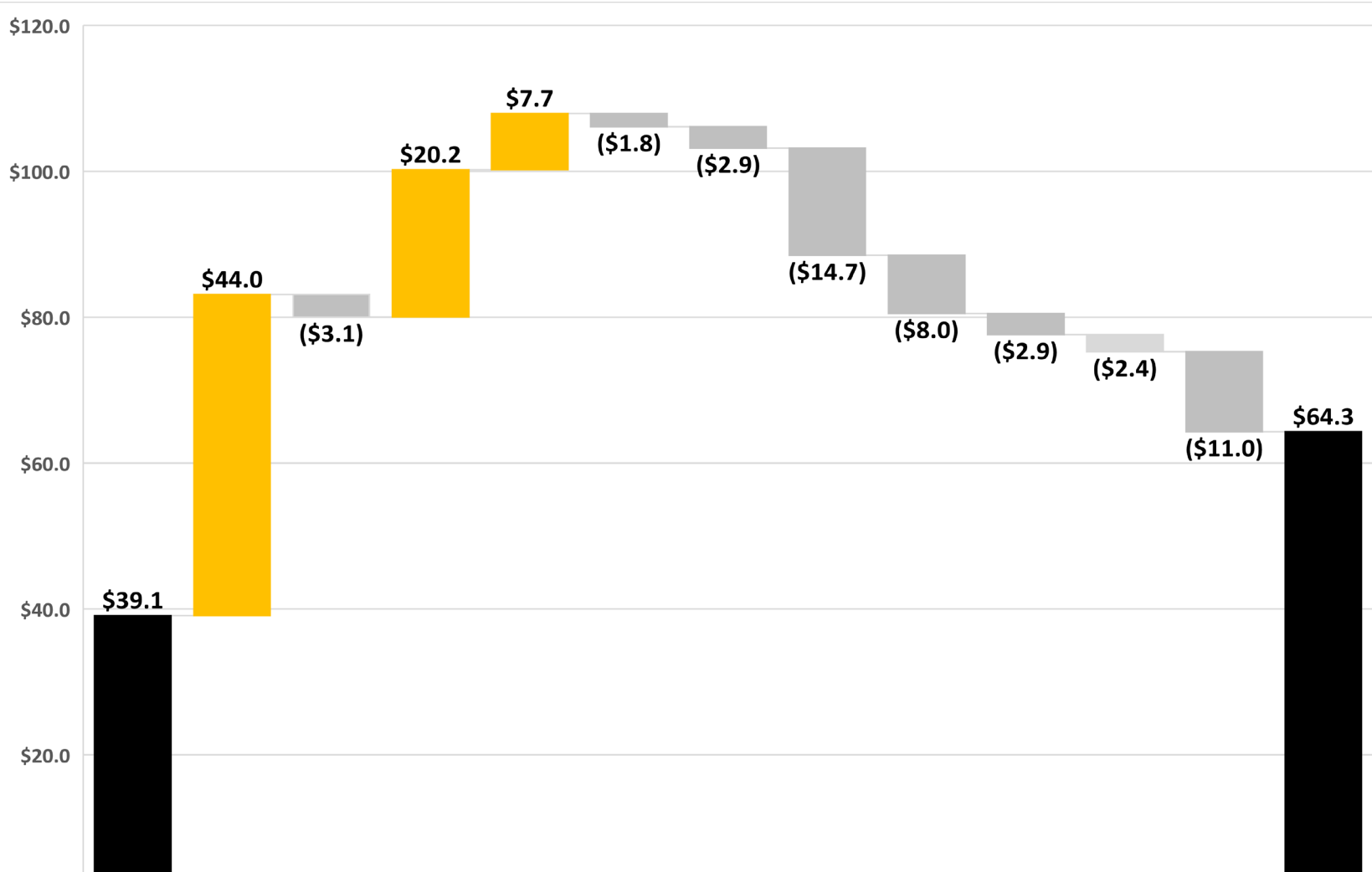
Improving Access through Clinical Care



Located near Battle High School at 7115 E. St. Charles Road

- **Battle Avenue Medical Building now open**
- **Brings much-needed access to health care to the north side of Columbia**
- **Primary care services for the entire family**
- **Continued access to care**
 - **Opening new Mizzou Urgent Care location at 2003 W. Broadway, Suite 100 in March 2021**
 - **Plans for new Boonville clinic**

Operating Income - Fiscal Year to Date 21

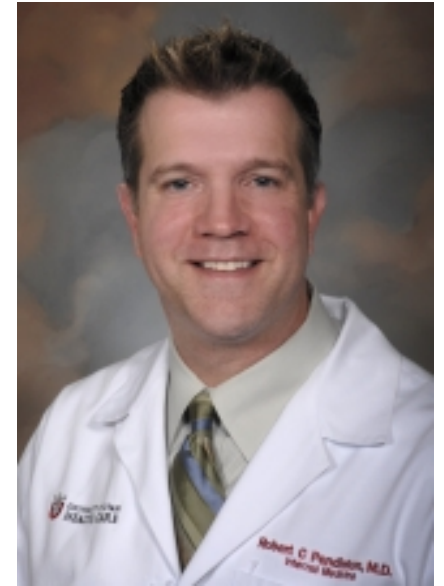


- While volume was slightly lower, operating revenue increased due to higher complexity of patients and more favorable collections
- Volume adjusted costs were unfavorable due to COVID-related expenses, higher agency costs, and supply expense related to more complex patients

Our New Chief Quality Officer

Dr. Robert Pendleton joined in November as chief quality officer

- Served as chief medical quality officer at University of Utah Health since 2012
- Top 10 in Vizient (2012-2019)
- Top 10 in Vizient ambulatory quality ranking (2015-2019)
- CMS 4 or 5-Star
- IBM Watson Top 100 Hospital in the Country (2017 and 2019)
- Health Grades Top 5



Robert Pendleton, MD

Under Dr. Whitt's Leadership ...



- Vizient Ranking – improved from **45th** to **23rd**
- **4-star Ranking** for Hospital Patient Satisfaction from Centers for Medicare & Medicaid Services
- Launched tiered huddles
- New data analytics dashboard



Questions?